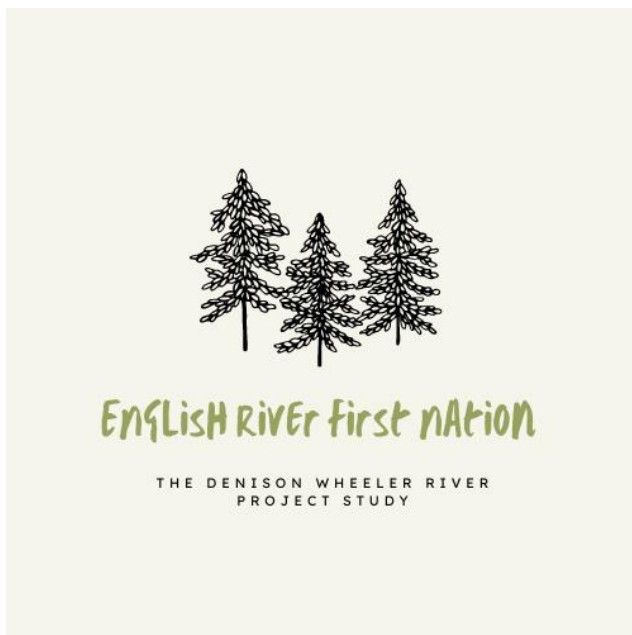




## English River First Nation Indigenous Knowledge and Socio-Economic Study for the Denison Mines Wheeler River Project



Unlike other uranium mining project, the extraction from Phoenix proposed by Denison Mines Corp will use an innovative approach that is the first of its kind in Canada. This technique, known as **in situ recovery**, will eliminate the need for an open pit mining operation or multiple shafts to access underground mine workings.

### What is in situ recovery uranium mining?

In situ recovery mining involves the use of an acidic solution. In the case of the Wheeler River Project, the mining solution will be injected into the uranium deposits through holes known as **injection wells**. After the solution has been injected and has absorbed the uranium, Denison will recover the solution through another set of drill holes, leaving the other minerals intact.

### How many injection wells will be drilled?

Denison projects that the wellfield (all the drill holes needed for injection and extraction) will contain 310 wells over a 90 m by 900 m area.

What is the Wheeler River Project?

**The Wheeler River Project is a proposed uranium mine and processing plant in northern Saskatchewan, located within the Traditional Territory of the English River First Nation (ERFN).**

If approved, the mining activities will occur in a relatively undisturbed area of the boreal forest about 4 km from Highway 914 and approximately 35 km north-northeast of the Key Lake uranium operation.





## Project construction

### The project includes:

- An access road from Highway 914 to the site (7 km long)
- A housing complex for workers
- An operations centre
- A runway 1,600 metres long
- A 5-km road from the site to the runway
- Site roads
- Storage for processing plant waste and mineralized drill cuttings from the wellfield development
- Water treatment ponds
- Drinking water, sewage, and wastewater treatment plants.

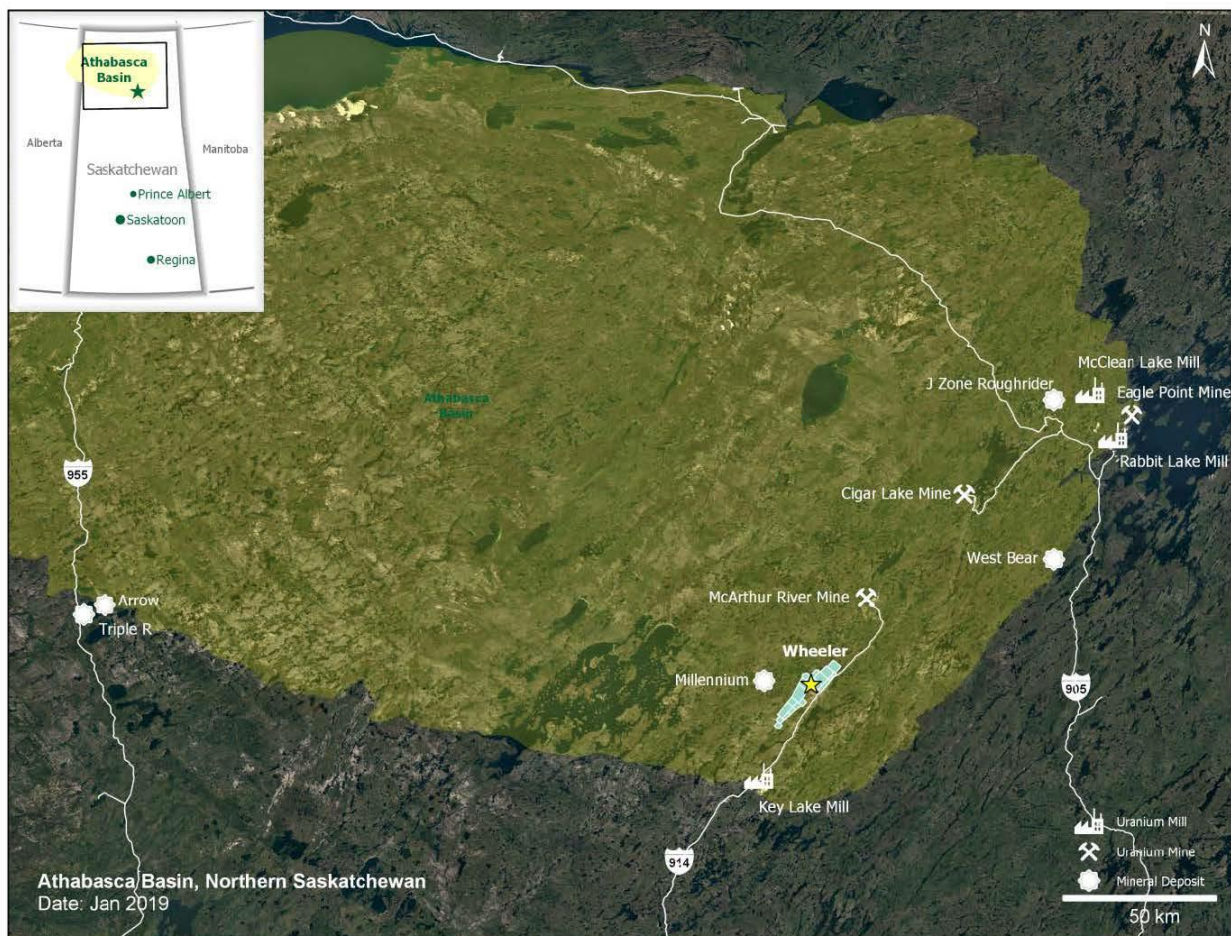
## Who is involved?

**English River First Nation (ERFN)** is engaging with Denison to establish a partnership regarding its Wheeler River Project and other exploration projects.

**Denison Mines Corp.** acknowledges that ERFN knows the values of its People and the Traditional Territory in which its activities are proposed.

ERFN has hired Shared Value Solutions to assist in collecting the community's input, concerns, and desires as it relates to the Wheeler River Project.

## Location of the Wheeler River Project





**Shared Value Solutions** is supporting the community in conducting a Traditional Knowledge and Land Use Study (TKLUS), a Health and Socio-Economic Study, and a Third-Party Technical Review.

## WHAT IS THE ROLE OF OUR NATION?

**Community participation** is needed. For both the TKLUS and Health and Socio-

Economic studies, community members are needed to identify, collect, and map information on knowledge, occupancy, and use of the land surrounding the mine.

The goal is to identify potential ecological, mental and physical health, social, and economic impacts caused by the mining project, and establish mitigation strategies to reduce impacts.

How can I participate?

### **Employment opportunities: Community researchers**

As a part of its work alongside the community, SVS is hiring and training two community researchers from ERFN. After partaking in workshops with SVS, community researchers will be equipped with the research and operations skills needed to assist with the Traditional Knowledge and Health and Socio-Economic





studies. Such skills include Geographic Information System (GIS) software, mapping, data management, and interviewing.

The goal of the positions is to support community researchers in developing long-term capacity and skills.

### **Research opportunities: Community interviews**

There are also opportunities for community participation in interviews. From late June to mid-July, SVS staff and ERFN community researchers will conduct interviews with active land users, Elders, and other interested participants who know the area around the proposed Denison mine. This will include looking at a map together and discussing ways participants have used the land and water around the Denison mine throughout their life.

### **The ERFN and SVS research team will also conduct interviews with members of the community:**

- Healthcare workers
- Social and community development staff
- Cultural and language program teachers
- Education service providers
- Employment services support
- Managers of economic development organizations

This will include talking about the current health, social and economic situation in English River and about potential impacts you could foresee from the Denison project.





## WHO SHOULD I CONTACT TO TAKE PART IN AN INTERVIEW?

**Interested participants should** email [Erfn.wheelerriver@gmail.com](mailto:Erfn.wheelerriver@gmail.com) or call Cheyenna Campbell by telephone: (306) 291-6808

**You can also visit ERFN on Facebook for project updates and community news!**